



a Clear2Pay company

# INQ® End-to-End Payment Platform

## EMV Contactless Level 1 Device Test Suite

### Description

The EMV Contactless Terminal Test Suite tests the compliance of contactless terminals to the EMV implementation specification (functional) following the EMV Contactless Terminal Type Approval executable tests.

The test suite is indispensable for testing and debugging EMV Contactless devices at the communication protocol and timing levels.

- Major cost savings when official certification is required
- Limited resources: automated solution
- Reduced time-to-market: full test in one hour without user interaction

The INQ Platform allows to parametrize the MP300 SCL1 hardware with regard to the clock frequency tuning, the timings, the parity and protocol errors to be injected. Integri's Viewer for Level 1 trace files allows checking the results of the tests execution from the APDU level till the electrical level. With the user-friendly navigator, a user is enabled an automated browsing between frames, bytes and electrical events.

The tool comes with approximately 500 test cases. Each test scenario precisely defines the expected terminal commands and corresponding smartcard responses. They can be accessed in an easy-to-edit text format and can be customized to define new test cases within Integri's Open Platform INQ®. Each time a test is run, the tool loads one of those scenarios in the MP300SCL1 for execution. Any significant discrepancy between the terminal's expected and actual behavior is automatically reported as a test error.

The results of the test sessions are summarized in a html report file detailing every single error encountered. Each error has a timestamp ensuring an easy tracking of the issues within the Level 1 trace file. The tests execution logs are presented in a universal text format.

The tool runs on top of the INQ® Level 1 Platform – Contactless Terminal configuration.

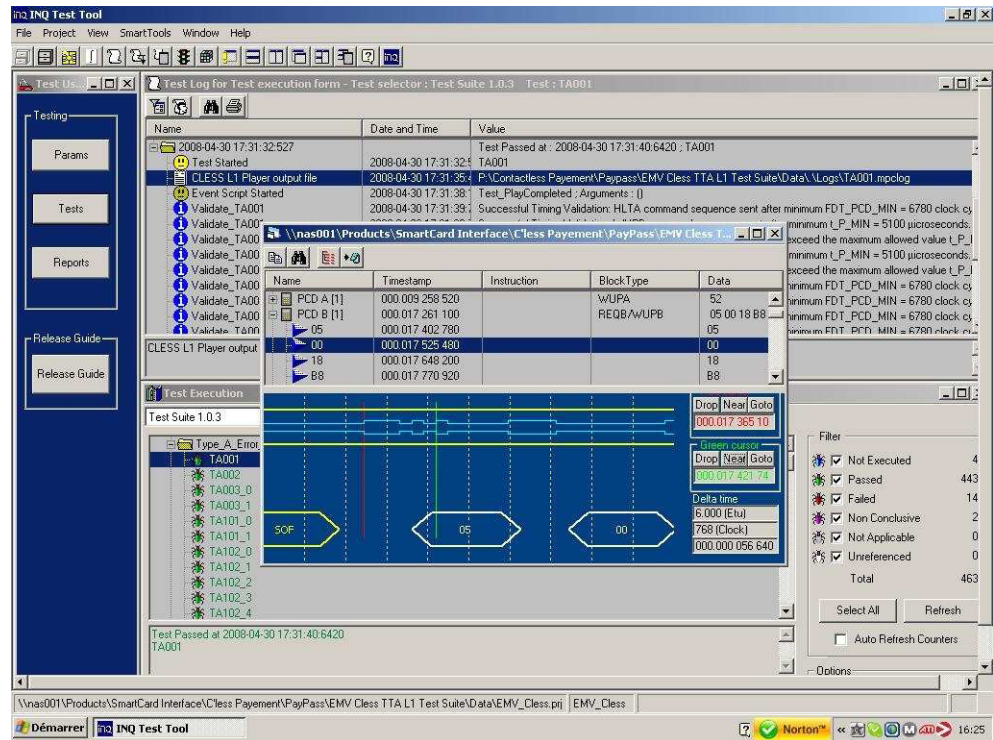


### Highlights

- Complete set of functional tests for contactless terminal level 1 type approval
- Complete testing recommended by EMVCo in a one-hour execution time
- Uses INQ's embedded contactless trace viewer and automated browser
- Fully automated – no user action required

Out of the box testing





## Technical Specifications

- EMV Contactless Terminal Type Approval : Test Bench Description, Executable Tests - TPP/EXE - Version 2.2 (8th Draft), March, 2008
- EMV Contactless Specifications for Payment Systems, EMV Contactless Communication Protocol Specification, version 2.0, August 2007.

## Product Family

Runs on the INQ<sup>®</sup> Level 1 Platform - Contactless Terminal Testing configuration  
Requires Micropross MP300 SCL1 hardware adapter and embedded software.

[www.integri.com](http://www.integri.com)



a Clear2Pay company

Integri is a wholly owned, autonomous business unit of Clear2Pay, an international financial technology company focused on delivering globally applicable solutions for secure, timely electronic payments. Clear2Pay operates from 13 international offices and currently employs over 400 staff.

**Integri headquarters**  
Leuvensesteenweg 325/3  
B-1932 Zaventem  
Belgium  
P: +32 2 717 69 00  
F: +32 2 717 69 67  
E: [info@integri.com](mailto:info@integri.com)  
W: [www.integri.com](http://www.integri.com)