



a Clear2Pay company

INQ[®] End-to-End Level 1 Platform

VISA Contactless Card Digital Test Suite

Description

Integri's Visa Contactless Card Digital Test Suite runs on top of the INQ Level 1 Platform – Contactless Card configuration. The test scripts meet the requirements of VISA's global contactless specifications. It is easy to use and contains around 135 tests developed in collaboration with Micropross and based on the specifications mentioned above. Each time a test is run, the tool in the MP300TCL1 loads a scenario that precisely defines the commands that are sent to the contactless card. During the validation process of the resulting trace files, any deviation from the test scenario is automatically reported as a test error. Any significant discrepancy between the card's expected and actual behavior is logged as a warning message.

Typical tests that are included in this library are:

- Tests that verify the response timing of contactless cards
- Tests that check the reaction of contactless cards on varying time intervals between the sending of frames and between bytes within the frames.
- Tests in which invalid frames are sent to contactless cards.
- Tests to verify if the contactless card correctly supports chaining from the terminals.


Key Features

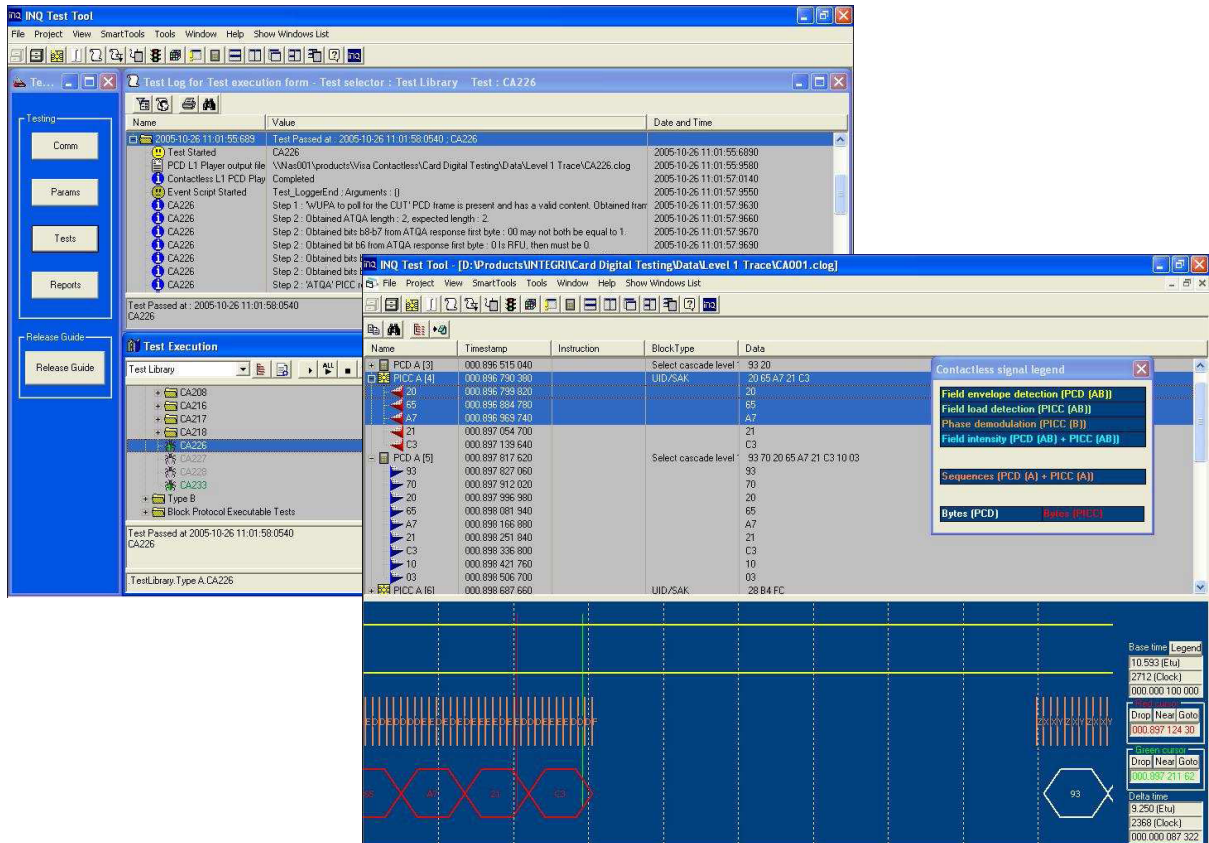
- Complete set of functional tests for contactless card level 1 type approval
- Integrated script editor allows the user to create any script file to be sent to the contactless card.
- Uses INQ's embedded contactless trace viewer
- Fully automated – no user action required

Technical specifications

- ISO/IEC 14443-3: 2001 identification cards – Contactless integrated circuit(s) cards – Proximity cards – Part 3: initialization and anti-collision
- ISO/IEC 14443-4: 2001 identification cards – Contactless integrated circuit(s) cards – Proximity cards – Part 4: transmission protocol
- ISO/IEC 14443 implementation specification, version 1.1, March 2006
- Card Type Approval – Test Bench Description Executable tests, version 2.0, February 2006. Test specifications for testing contactless cards with VISA applications.

Out of the box testing





Product family

Runs on the INQ Level 1 Platform - Contactless Card Testing configuration.
Requires Micropross MP300TCL1 card reader and embedded software.

www.integri.com



Integri

a Clear2Pay company

Integri is a wholly owned, autonomous business unit of Clear2Pay, an international financial technology company focused on delivering globally applicable solutions for secure, timely electronic payments. Clear2Pay operates from 13 international offices and currently employs over 400 staff.

Integri headquarters

Leuvensesteenweg 325/3
B-1932 Zaventem
Belgium
P: +32 2 717 69 00
F: +32 2 717 69 67
E: info@integri.com
W: www.integri.com