



Integri

a Clear2Pay product

EMV EMD Extension

Integri Level 1 Platform

Description

Test how your Proximity Coupling Device (PCD) deals with Electromagnetic Disturbances (EMD)

Your Benefits

- **Gain time:** automated test tool
- **Essential:** EMD tests are part of the EMV PCD certification tests
- **Cost-effective:** guarantees your Contactless Level 1 Terminal Type Approval
- **Customer confidence:** get the highest possible quality products
- **Durable solution:** specification updates included in maintenance

For who?

Terminal manufacturers
Test laboratories

Product Features

What is EMD?

EMD is a disturbance on the data signal generated by the functioning of the electrical circuit. More specifically, it concerns the unwanted additional noise that is generated by the Proximity Integrated Circuit Card (PICC) for example when fast cryptographic calculations are used during, for example, Generate AC, Internal Authenticate and External Authenticate Processing.

Issues with EMD

This EMD noise is added to the normal data communication and high disturbance levels can degenerate the communication between PICC and PCD.


The key Extension Tool

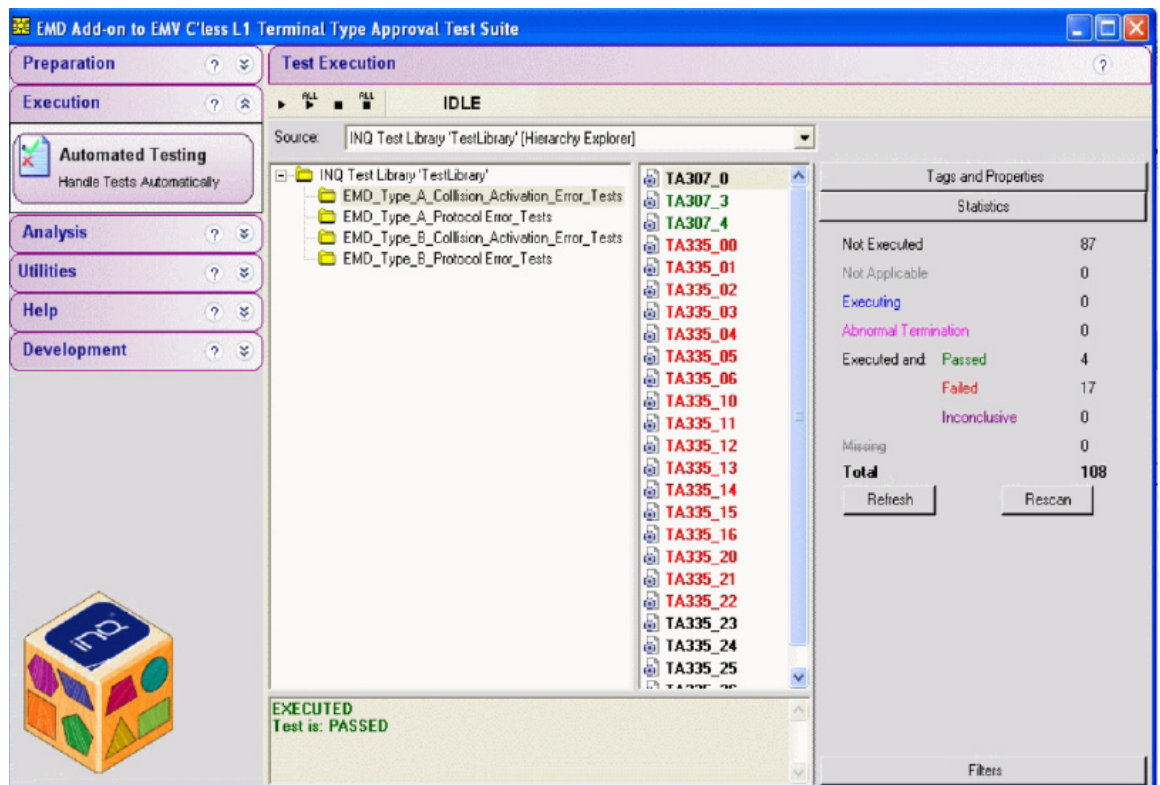
The EMV EMD Extension Tool is the perfect match to Integri's EMV Contactless Level 1 Terminal Test Suite and uses the same Platform and MicroPross SCL-1 hardware so there's no additional investment needed. However, the extension can run as a standalone tool as well.

It's an indispensable tool because EMD testing is a part of the official EMVCo Certification process for Contactless Terminals such as PCDs. It's the essential tool to ensure your Terminal is to pass the EMV Level 1 Type Approval Process.

EMVCo Qualified 

EMVCo, the standards body jointly owned by American Express, JCB, MasterCard and Visa commissioned Integri to develop this Extension Tool. The Tool is officially qualified by EMVCo.

Out of the box testing 



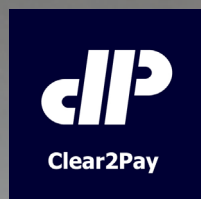
Related product

EMV Contactless Level 1 Terminal Test Suite

Product Family

Requires the "Integri Level 1 Contactless Platform – Terminal Testing" configuration
 Requires the MicroPross MP300 SCL-1

www.integri.com



Integri is a product brand of Clear2Pay, an international financial technology company focused on delivering globally applicable solutions for secure, timely electronic payments. Clear2Pay employs over 850 staff.

Clear2Pay

Leuvensesteenweg 325/3
 B-1932 Zaventem
 Belgium
 P: +32 2 717 69 00
 F: +32 2 717 69 67
 E: info@clear2pay.com
 W: www.clear2pay.com
 W: www.integri.com

