

Description

To simplify implementations and enhance the global interoperability of Contactless Cards, EMVCo - the EMV standards body - defined complete Level 1 test specifications.

Prior to commercial roll-out, contactless payment cards require official certification proving conformity to these EMVCo specifications. **The Integri branded tool "EMV Contactless Card Type Approval Level 1 Test Suite" is qualified by EMVCo** and covers the test requirements for all major card schemes.



The EMV Test Suite is available as an off-the-shelf product for your debugging and pre-certification needs. It runs on the flexible Integri Open Test Platform (former INQ).

EMVCo certification of your contactless cards is mandatory and Clear2Pay's Integri tool for EMV contactless card testing is the only product available on the market.

Your benefits

- **Essential:** the only qualified tool available on the market
- **Cost-efficient:** One single test tool for all major credit card brands
- **Save money:** use the tool for pre-certification for guaranteed official lab certification
- **Gain time:** Automated Test Tool
- **Complete:** includes all tests for contactless card level 1 type approval
- **Flexible:** runs on the modular and scalable Integri Open Test Platform (former INQ)
- **Proven Integri technology:** used by test laboratories and major companies worldwide

For who

Smart card manufacturers and test laboratories

Product Features

The Integri Level 1 Contactless Card Test Suite is the only tool available for the validation of the digital functionality of the communication protocol for contactless EMV cards. The EMVCo standard for contactless cards specifies a minimum common set of card implementation options, card application behaviours and data element definitions sufficient to accomplish a correct EMV transaction. The Test Suite contains fully prepared reference test scenarios as defined by EMVCo.

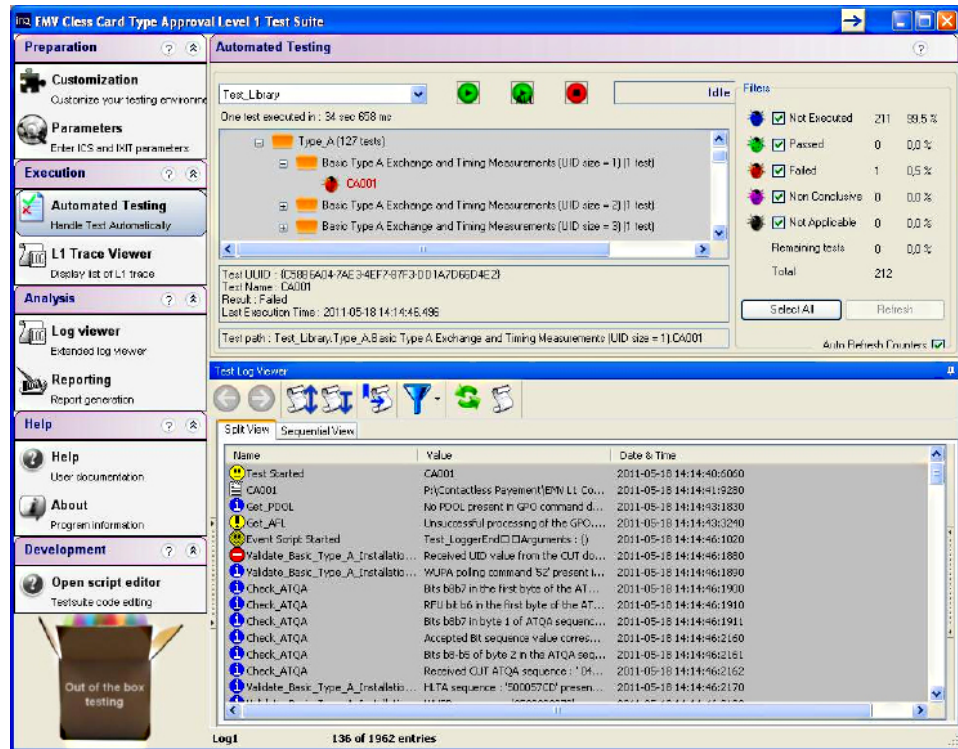
The graphical user interface caters for an intuitive, easy-to-use tool featuring automated test scripts for minimal manual interaction. The tool enables applicative testing and performs both positive and negative tests. A comprehensive log file generator is included for the validation of the test results and a report details all necessary functionalities. A Software Development Kit is available allowing to adapt the tool to your very specific needs.

Examples of Acceptance Criteria validated by the tool:

- Verify if your Contactless Card respects the frame format, the timings and the order of the commands in a basic exchange during installation and block protocol.
- Ensure that your Cards accept sequences received with the minimum and longer Frame Delay Time during installation and block protocol.

- Check if your Contactless Cards accept Installation/Protocol commands with RFU bits set
- Test if the Card behaves correctly when it receives an erroneous frame in a specific state during installation phase and/or correctly manages errors during protocol phase
- ...

Screen shot



Technical Specifications

EMVCo PICC Level 1 Protocol Digital Test Cases, Version 2.1a, October 2011

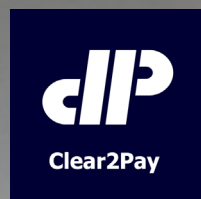
EMV Contactless Communication Protocol Specification, 2.1, March 2011

CAWG Communication No 10 2nd Edition - Updates to the EMVCo PICC Level1 Protocol Digital Test Cases

Product Family

Requires Integri Level 1 Open Test Platform - Contactless configuration

www.clear2pay.com



Clear2Pay is a payments modernisation company that actively supports many global financial institutions. The company's end-to-end Open Test Solutions coupled with a dedicated testing process significantly reduce the risk, time-to-market and cost of your payment, mobile or transport system implementations.

Clear2Pay

Leuvensesteenweg 325/3
B-1932 Zaventem
Belgium
P: +32 2 717 69 00
F: +32 2 717 69 67
E: info@clear2pay.com
W: www.clear2pay.com
W: www.integri.com