

Near Field Communication (NFC) is still a relatively young technology. It enables fast and secure short-distance data transfers between devices such as mobile phones, smart phones, PDAs, camera's,... just by bringing devices and tags close together.

The dawning of the NFC era opens up a whole new range of business opportunities: it's a technology with an enormous potential and the possibilities are endless. Commercial introduction of the technology will significantly simplify the way consumer devices interact with one another, helping people speed up connections, receive and share information and make fast and safe payments. However, the interconnectivity devices and tags need to be accurate and interoperable. To guarantee this, all NFC equipment needs to be compliant with the NFC Forum specifications.

Real life applications go beyond the contactless interface communication between two NFC devices. One of the possible architectures is using the UICC as a secure environment to run the application in and to store the data. The Host Controller Interface (HCI) is a logical interface on top of the Single Wire Protocol (SWP), allowing a Contactless Front End (CLF) to communicate with the UICC. The SWP is the communication protocol between the handset and the UICC.



Are you looking to introduce NFC?

Clear2Pay has the expertise, trainings and test tools for NFC and the Host Controller Interface (HCI).

Clear2Pay is an
NFC Forum Partner



Product Features HCI UICC Test Suite

The Integri Host Controller Interface (HCI) UICC Test Suite verifies if the UICC implements the HCI and HCP layers according to the ETSI specifications. The Host Controller Interface (HCI) is a logical interface on top of the Single Wire Protocol (SWP), allowing a Contactless NFC Front End to communicate with the UICC. The SWP is the communication protocol between the handset and the UICC.

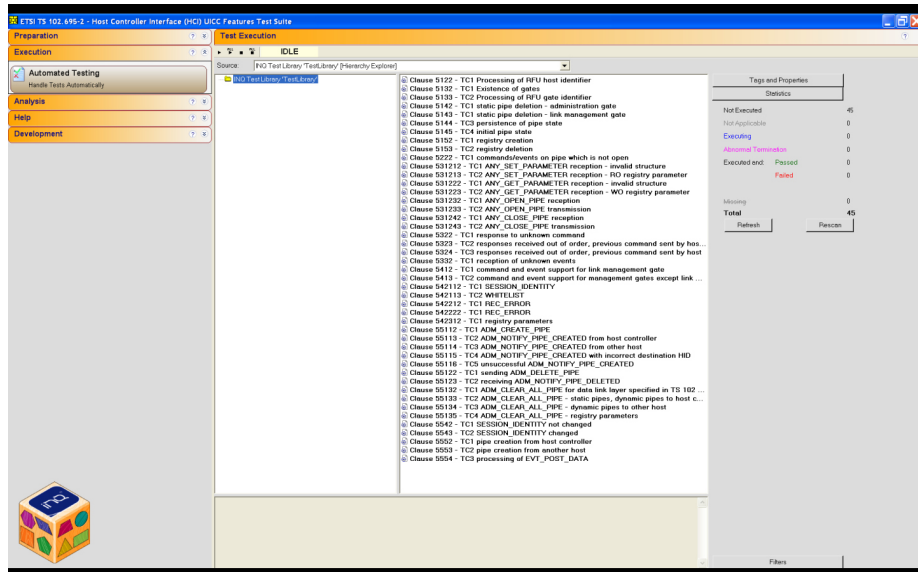
The automated test suite is based on the ETSI TS 102 695-2 V7.0.0 (2009-10) test specification for the Host Controller Interface (HCI) - Part 2: UICC features (Release 7). The HCI Test Suite is built on the Integri Open Test Platform (former INQ), for easy customization. It gives you the freedom to build the project, adapted to your very specific needs.

The Integri test suite includes test cases covering:

- HCI Architecture at the level of
 - Hosts
 - Gates
 - Pipes
 - Registries
- HCP
 - HCP message structure
 - Instructions
 1. Generic Commands: ANY_SET_PARAMETER, ANY_GET_PARAMETER, ANY_OPEN_PIPE, ANY_CLOSE_PIPE
 2. Responses (response to unknown command, responses received out of order)
 3. Events
- Gates
 - Administration gates
 - Link management gate
 - Identity management gate
 - Loop back Gate



- HCI procedures
 - Pipe management (Pipe creation, deletion, clear all pipes)
 - Session Initialisation
 - Loop back testing



Your benefits

- **Gain time:** automated test solutions
- **Time-to-market:** prepare your NFC products NOW
- **Flexible:** built on INQ Open Platform allowing to add tests or modify to your specific requirements
- **Robust:** field-proven technology used by renowned global companies
- **Trusted:** Integri tools are built on more than 18 years of experience
- **Accurate:** ensures interoperability
- **Customer confidence:** enables to deliver the highest possible quality NFC products
- **User-friendly:** easy to install, graphical user interface
- **Comprehensive offering:** Expert Centre provides you NFC knowledge

Product Family

Requires the Integri Mobile Handset Testing Platform

Uses MicroPross MP300 TC3

Related Product Flyers

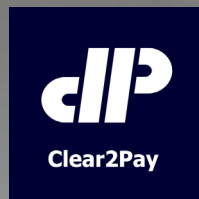
HCI Terminal Test Suite

NFC Forum Device Type Approval Test Suite

SWP Terminal Test Suite

SWP UICC Test Suite

www.clear2pay.com



Clear2Pay is a payments modernisation company that actively supports many global financial institutions. The company's end-to-end Open Test Solutions coupled with a dedicated testing process significantly reduce the risk, time-to-market and cost of your payment, mobile or transport system implementations.

Clear2Pay

Leuvensesteenweg 325/3

B-1932 Zaventem

Belgium

P: +32 2 717 69 00

F: +32 2 717 69 67

E: info@clear2pay.com

W: www.clear2pay.com

W: www.integri.com